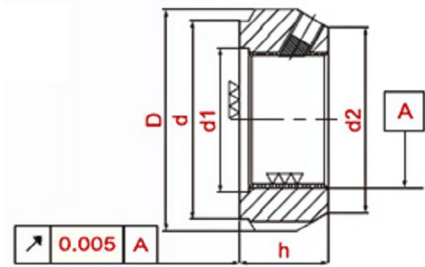
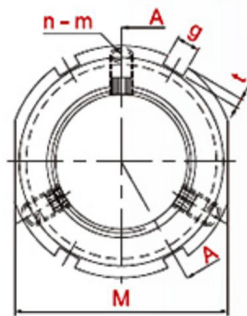


FT Serie: Sicherung seitlich
FT Series: Locking flank



Einheit/Unit (mm)

Artikel Item	Gewinde Thread	D	h	g	t	d	d1	d2	M	n-m	Max.Nm
FT-M10×0,75	M10×0,75	28	14	4	2	23	11	21	24	3 - M4	4,5
FT-M12×1	M12×1	30				25	13	23	27	3 - M5	
FT-M15×1	M15×1	33	16			28	16	26	30		
FT-M17×1	M17×1	37	18	5	1,5	33	18	29	34	3 - M6	8
FT-M20×1	M20×1	40				35	21	32	36		
FT-M25×1,5	M25×1,5	44	20	5	2	39	26	36	41		
FT-M30×1,5	M30×1,5	49				44	32	41	46		
FT-M35×1,5	M35×1,5	54	22	6	2,5	49	38	46	50	3 - M8	18
FT-M40×1,5	M40×1,5	65				59	42	56	60		
FT-M45×1,5	M45×1,5	70	64	48	61	65					
FT-M50×1,5	M50×1,5	75	25	7	3	68	52	65	70	3 - M10	35
FT-M55×2	M55×2	85				78	58	74	80		
FT-M60×2	M60×2	90	28	8	3,5	82	62	78	85		
FT-M65×2	M65×2	95				87	68	83	90		
FT-M70×2	M70×2	100	32	10	4	92	72	88	95	3 - M8	18
FT-M75×2	M75×2	105				97	77	93	100		
FT-M80×2	M80×2	110	10	4	4	100	83	98	-		
FT-M85×2	M85×2	120				110	88	107	-		
FT-M90×2	M90×2	125	12	5	4	115	93	112	-	3 - M10	35
FT-M95×2	M95×2	130				120	98	117	-		
FT-M100×2	M100×2	135	14	5	4	125	103	122	-		
FT-M110×2	M110×2	145				134	112	132	-		
FT-M120×2	M120×2	155	16	5	4	144	122	142	-	3 - M10	35
FT-M130×2	M130×2	165				154	132	152	-		
FT-M140×2	M140×2	175	18	5	4	164	142	162	-		
FT-M150×2	M150×2	185				174	152	172	-		
FT-M160×3	M160×3	195	14	5	5	184	162	182	-	3 - M10	35
FT-M170×3	M170×3	205				194	172	192	-		
FT-M180×3	M180×3	215	16	5	5	204	182	202	-		
FT-M190×3	M190×3	225				214	192	212	-		
FT-M200×3	M200×3	235	224	202	222	-					