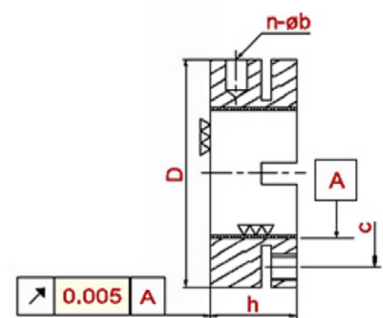
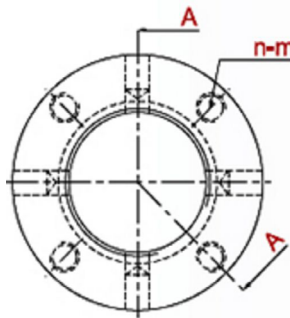


AM Serie: Sicherung elastisch axial
AM Series: Locking clasp axial



Einheit/Unit (mm)

Artikel Item	Gewinde Thread	D	h	n-m	n-øb	c	Max.Nm	
AM-M15x1	M15x1	30	18	4-M5	4-ø4	22	4,5	
AM-M17x1	M17x1	32				24		
AM-M20x1	M20x1	38				29		
AM-M25x1,5	M25x1,5	45	20	4-M6	4-ø5	36	8	
AM-M30x1,5	M30x1,5	52				43		
AM-30/65-M30x1,5	30/65-M30x1,5	65	30	4-ø6	4-ø6	45		
AM-M35x1,5	M35x1,5		22			56		
AM-35/58-M35x1,5	35/58-M35x1,5	58	20	4-ø5	4-ø6	49		
AM-M40x1,5	M40x1,5	65	22			56		
AM40/85-M40x1,5	40/85-M40x1,5	85	32	6-M6	6-ø6	58		18
AM-M45x1,5	M45x1,5	70	22			61		
AM-M50x1,5	M50x1,5	75	25	6-M8	6-ø6	66		
AM-M55x2	M55x2	85	26			73		
AM-M60x2	M60x2	90		28	6-ø8	6-ø8	80	
AM-M65x2	M65x2	100	30				6-M10	
AM-M70x2	M70x2			115	32	8-M10		8-ø8
AM-M75x2	M75x2	110	30	8-M10			8-ø8	
AM-M80x2	M80x2	115			30	8-M10		8-ø8
AM-M85x2	M85x2	130	30	8-M10			8-ø8	
AM-M90x2	M90x2	140			30	8-M10		8-ø8
AM-M100x2	M100x2	155	30	8-M10			8-ø8	
AM-M110x2	M110x2	165			30	8-M10		8-ø8
AM-M120x2	M120x2							
AM-M130x2	M130x2							